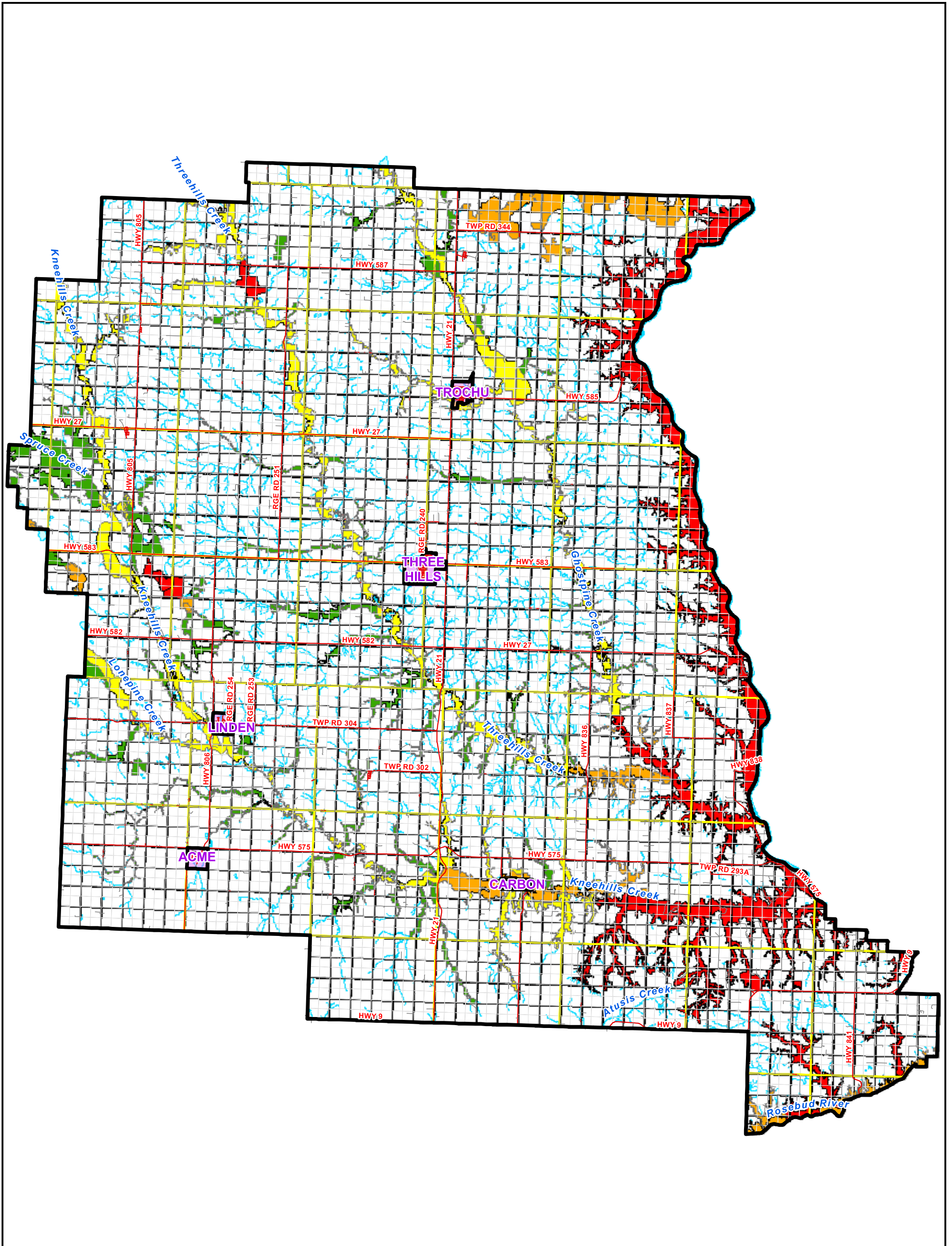


Environmentally Significant Areas - Kneehill County 2009



SUMMIT
ENVIRONMENTAL CONSULTANTS LTD.

Legend

Municipal Boundary

ESA Level of Significance

- 1 (Very High)
- 2 (High)
- 3 (Moderate)
- 4 (Low)

- ESA Criteria*
- 1 Hazard lands and areas unsafe to develop (ie floodplains, steep or unstable slopes)
 - 2 Vital environmental, ecological or hydrological functions
 - 3 Areas with rare or unique geological or physiographic features
 - 4 Areas which contain significant, rare or endangered species
 - 5 Unique habitats or remnants of once large habitats
 - 6 Areas with unusually high diversity
 - 7 Areas with large and relatively undisturbed habitats
 - 8 Areas that provide a linking function and permit movement for wildlife
 - 9 Areas that are excellent representatives of one or more ecosystems or landscapes that characterize a natural region
 - 10 Areas with intrinsic appeal or widespread community interest
 - 11 Areas with histories of scientific research
 - 12 Areas of historical importance
- *These criteria were used to help determine the Level of Significance

Sources: Kneehill County,
and the Government of
Alberta

Projected in NAD 1983,
UTM Zone 12

